

The Westchester

2,485 Square Foot Two Story Home

Ashbury East Lot 11, Pleasant Prairie WI

QUALITY FEATURES

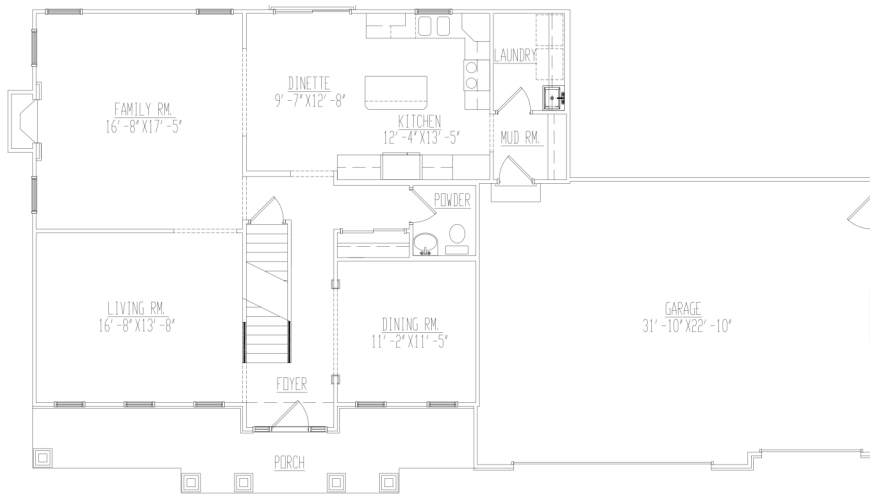
Priced At Only \$609,000!!!

- ◆ Focus On Energy Certified
- ◆ 9' First Floor Ceilings
- ◆ 3 Car Finished Garage With Insulated Overhead Doors & Openers
- ◆ Paneled White Doors & White Trim
- ◆ Timberlake Cabinetry With Dovetail Easy Close Drawers
- ◆ Granite Countertops Throughout
- ◆ Built In Cabinetry In Mudroom & Laundry
- ◆ Tile & LVP Floors
- ◆ Tile Shower With Bench Seat
- ◆ Concrete Driveway & Walkway

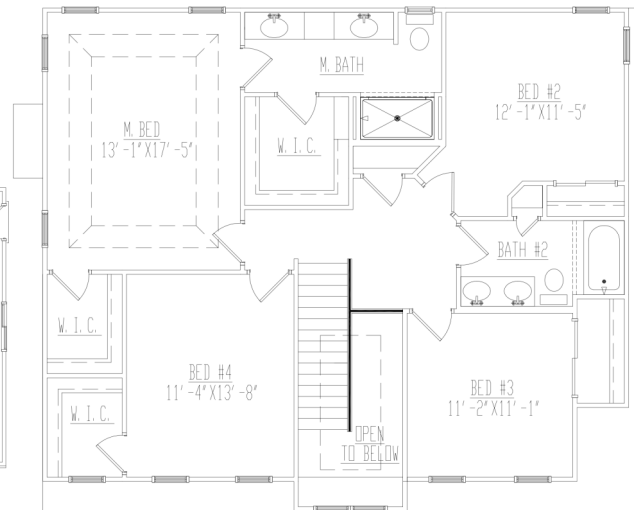


Front Elevation

First Floor



Second Floor



8501 75th St Suite H

Kenosha WI 53142

Office: 262-694-1677

www.HarpeDevelopment.com



focus on energy®

Partnering with Wisconsin utilities